

Flinders Island in a Tesla Model 3



Charles Gregory – March 2025

History

September 9, 2011

Renewable Energy Flinders Island

Flinders Island Car Rentals is excited to announce that they have received funding from the 2011 Renewable Energy Fund – King and Flinders Islands, to go towards a new electric car and solar panels. Flinders Island Car Rentals have decided to purchase a Mitsubishi i-MiEV. The i-MiEV will be used as a Clean, Green Airport Shuttle vehicle to transport [...]



Why do it?



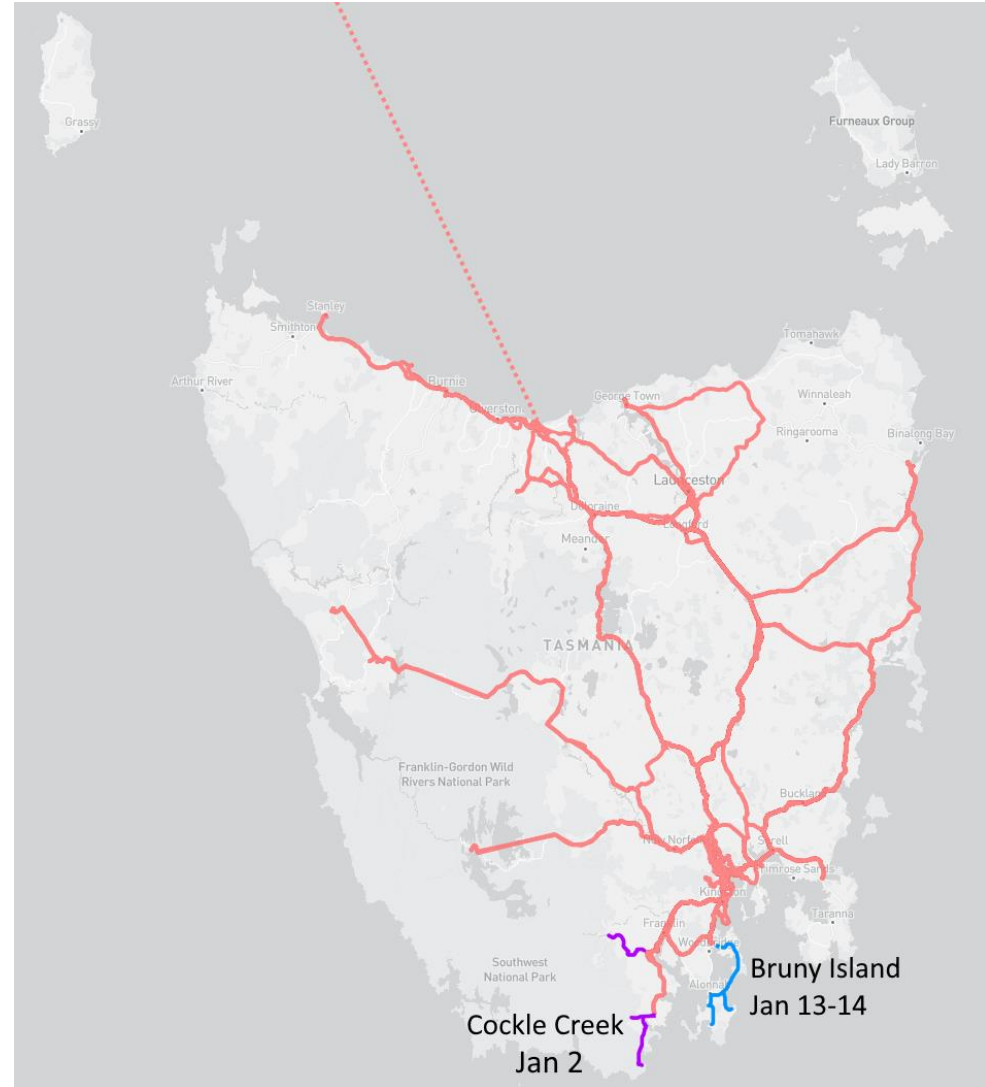
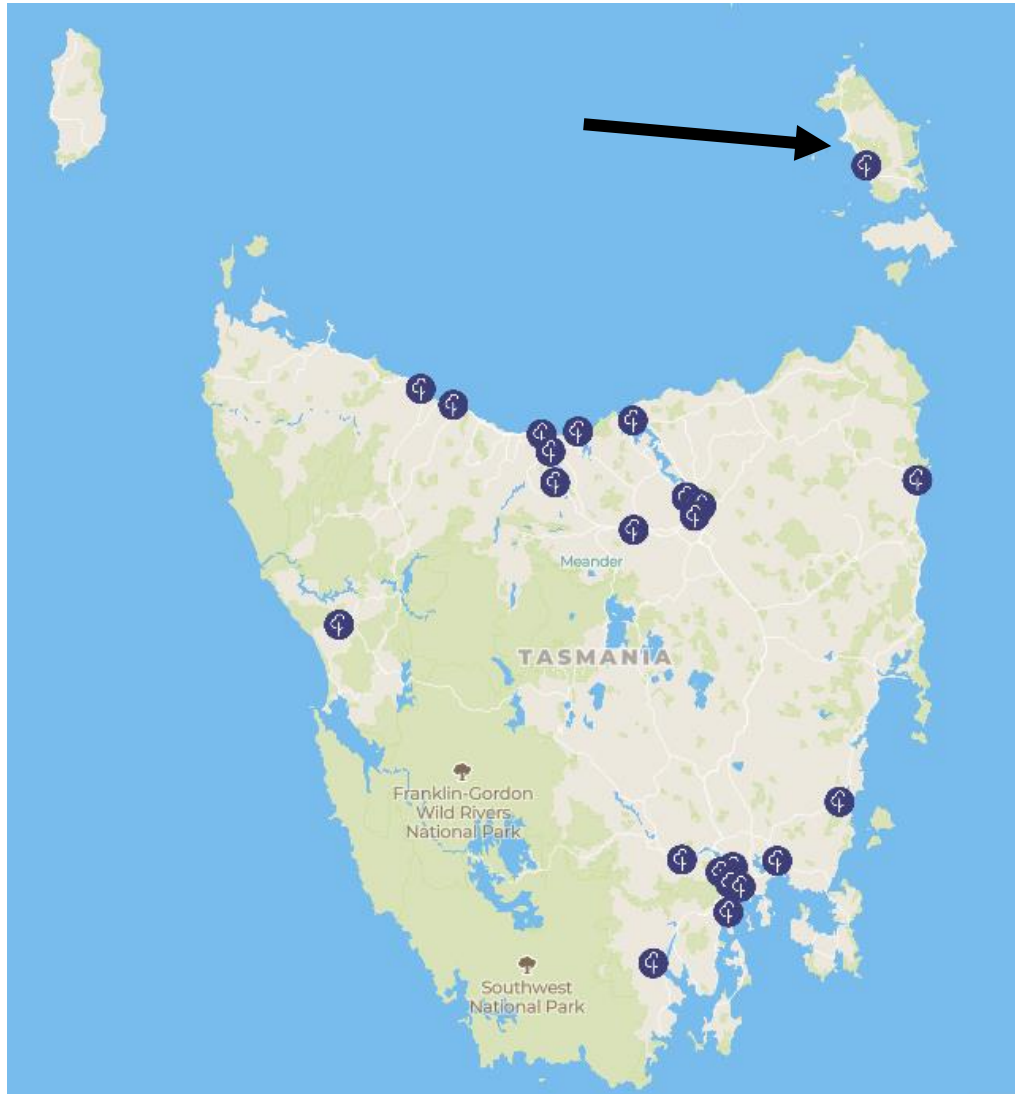
Charles Gregory

26 January 2024 · 🌐

I recently learned that there was a ro-ro ferry to Flinders (delivered as cargo). It's only once a week, and it takes a Spirit, but it does exist!
This makes Flinders Island one of the last parts of the state



Why do it?



How to do it?



COMMUNITY NOTICEBOARD
FLINDERS ISLAND AIRPORT

FLINDERS
COUNCIL

f YouTube

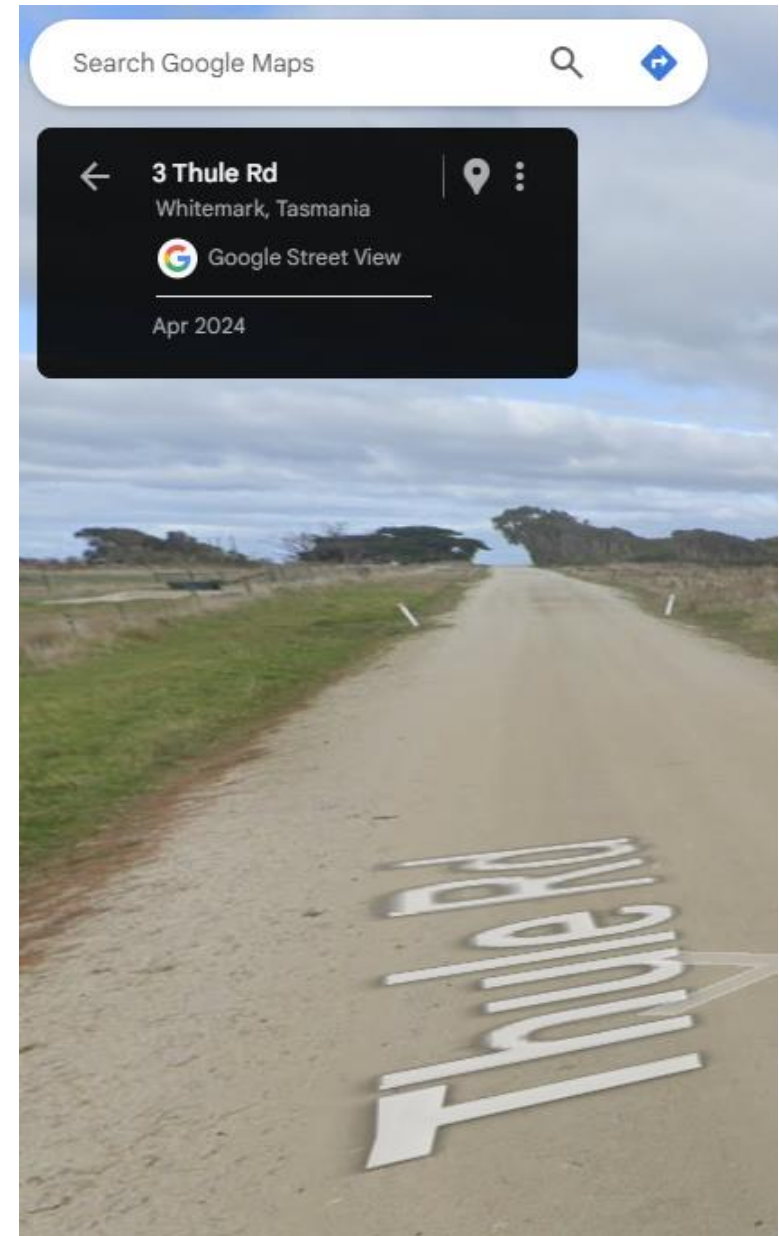
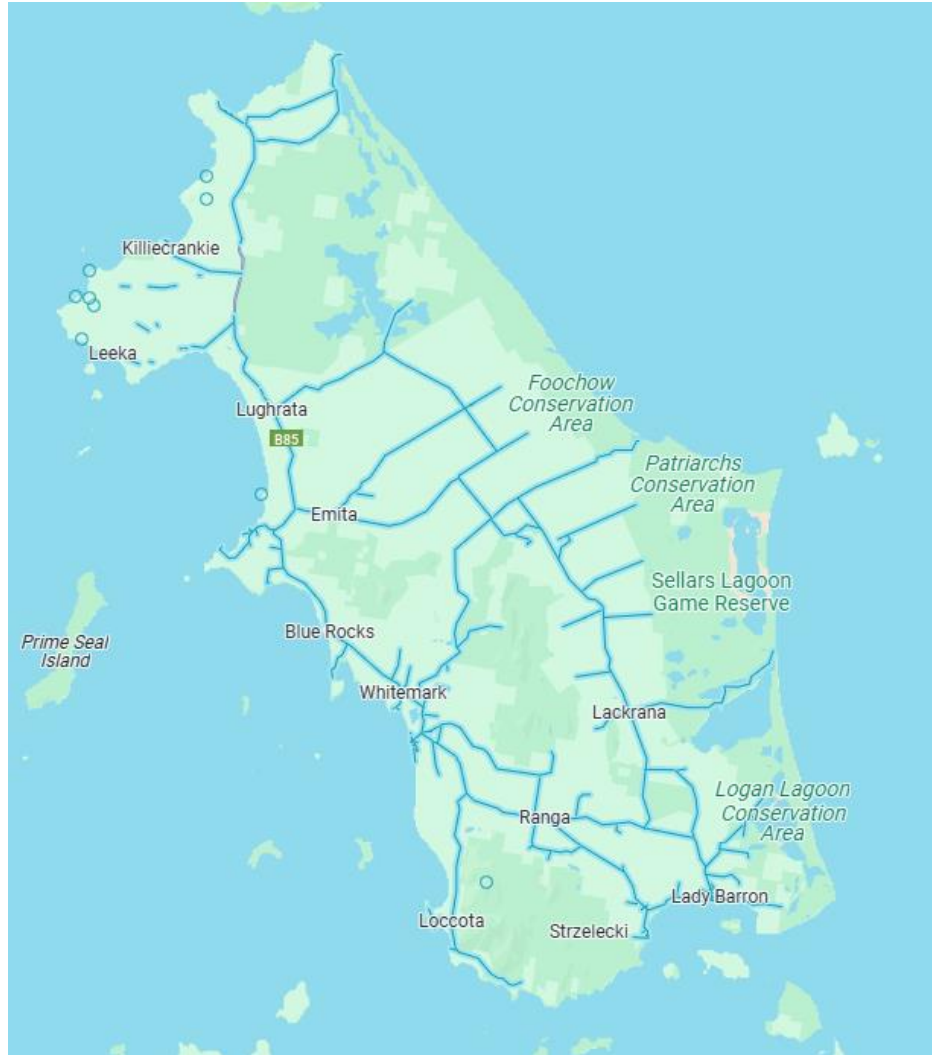
Search 

- Camping on Flinders Island

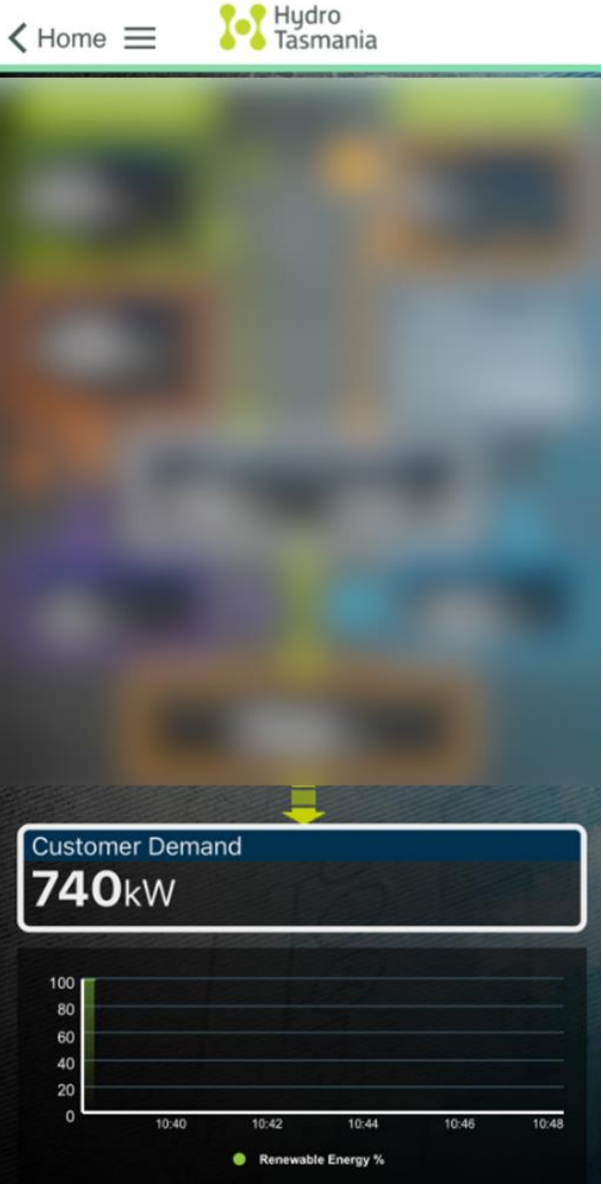
POWER

When camping on Flinders Island, you need to be self sufficient. There are NO powered camping sites. If you need to recharge batteries - an option would be to stay in one of the accommodation houses for an evening. Enjoy some creature comforts and recharge.

How to do it?



How to do it?



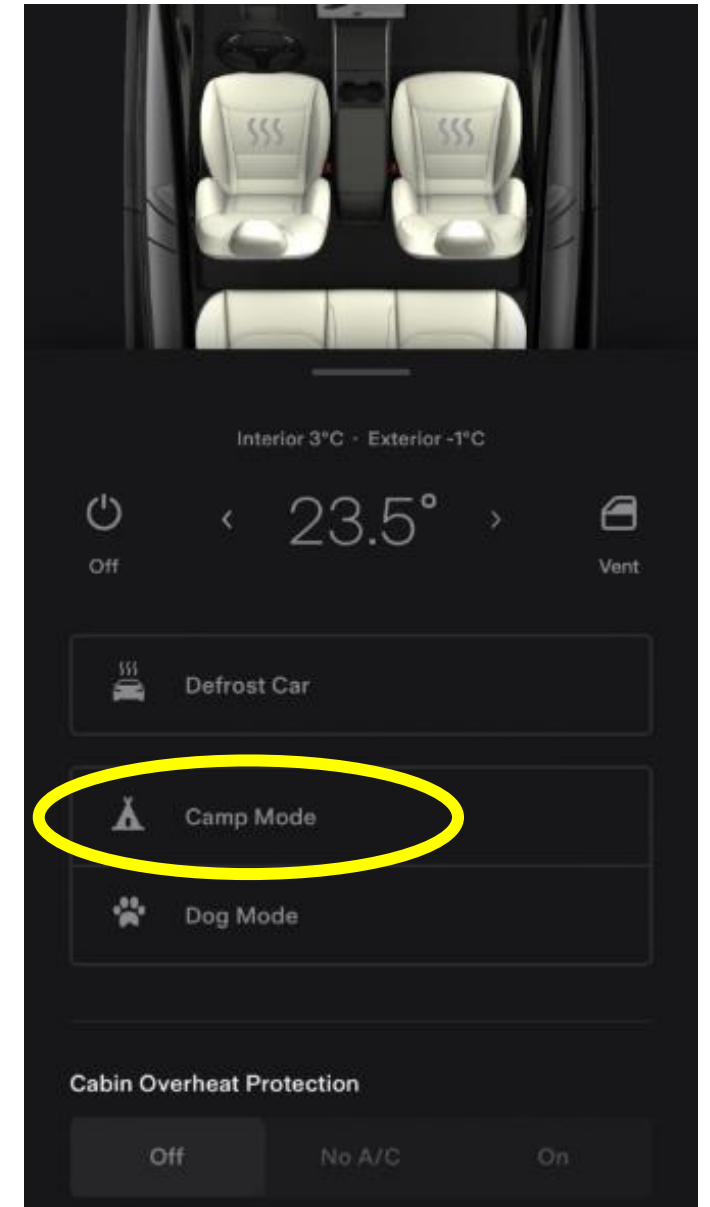
How to do it?

- Flinders Airport ✘
- Flinders Island Car Rental ✘
- Hydro Tasmania ✘
- Flinders Council ✘

Good afternoon Charles,
No problem – most of our cabins have external power points available.
Cheers, Mick

- Flinders Island Cabin Park ✔

Preparation – “camping”



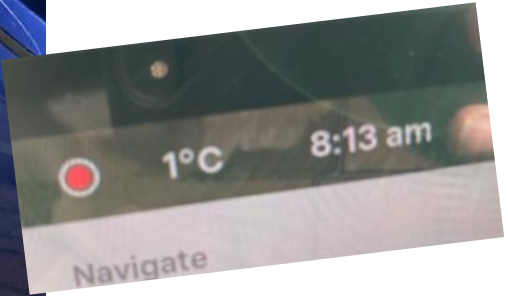
Preparation - equipment



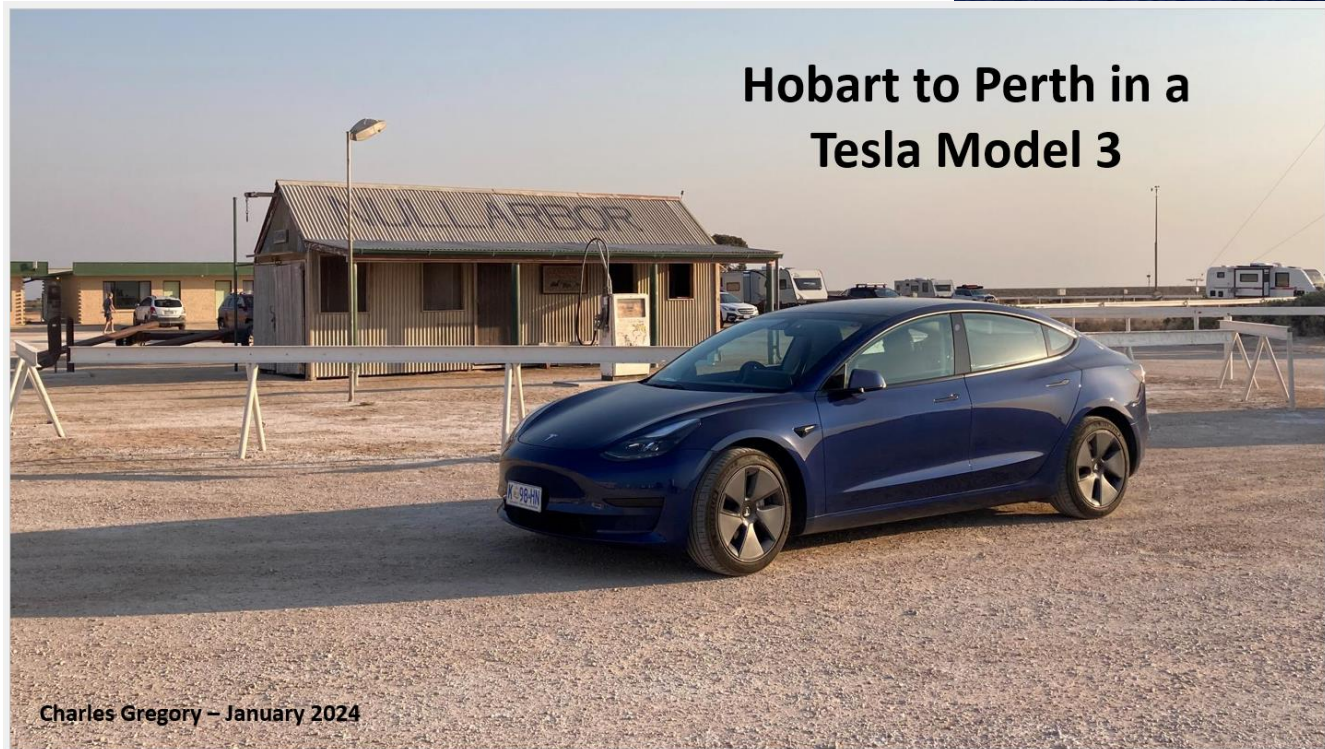
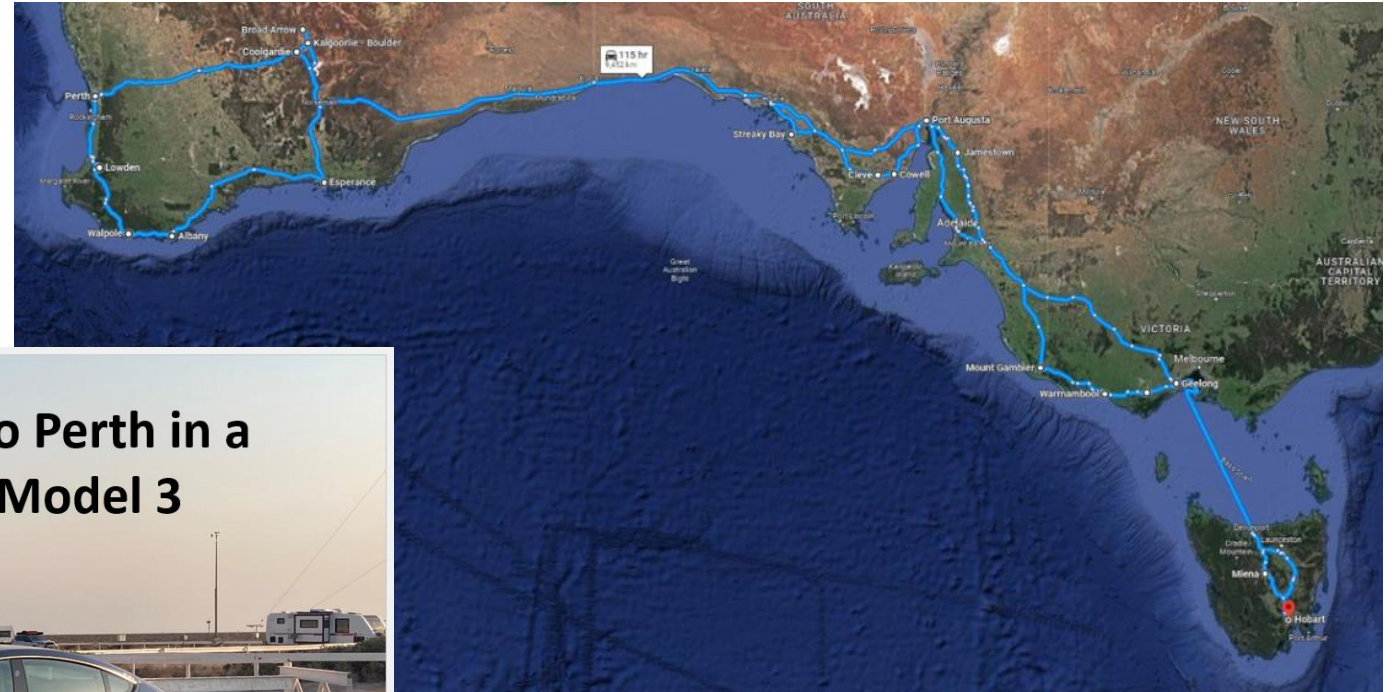
Preparation - gadgets



Preparation – “camping”



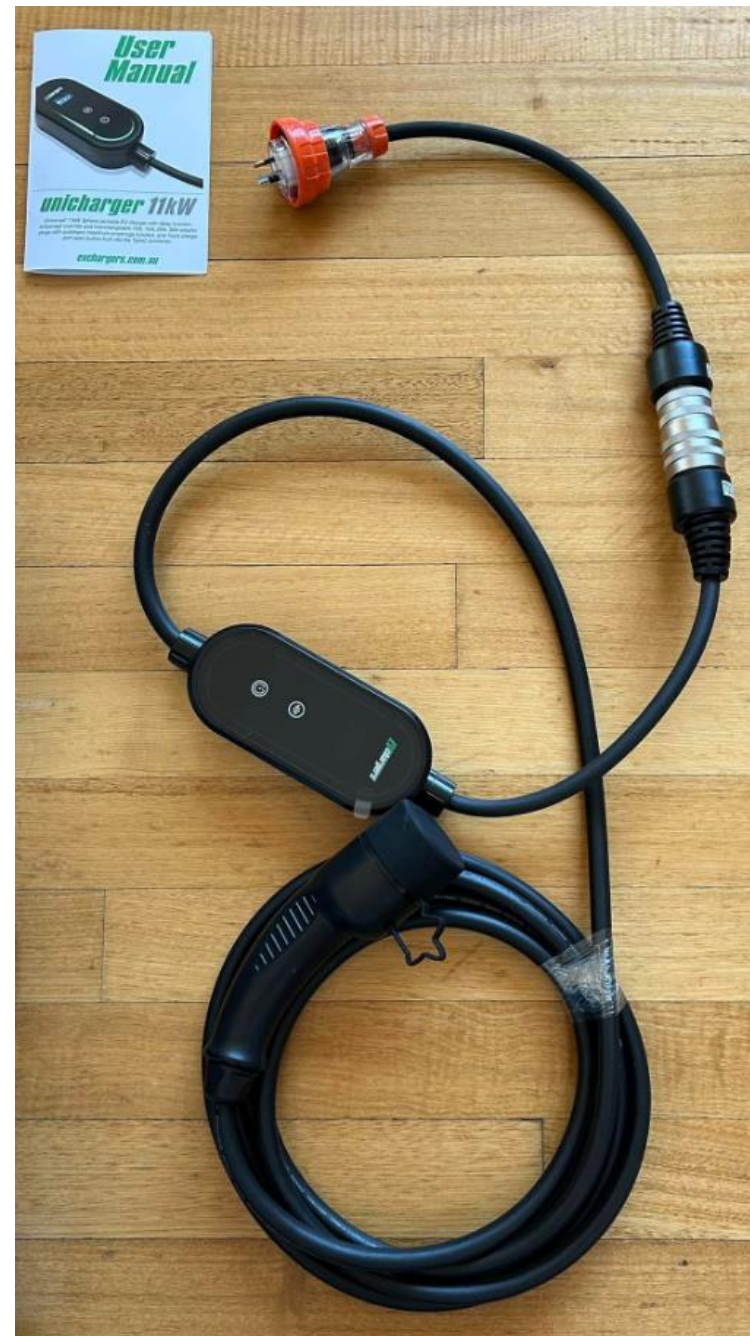
Preparation – “camping”



**Hobart to Perth in a
Tesla Model 3**

Charles Gregory – January 2024

Preparation - equipment



Logistics



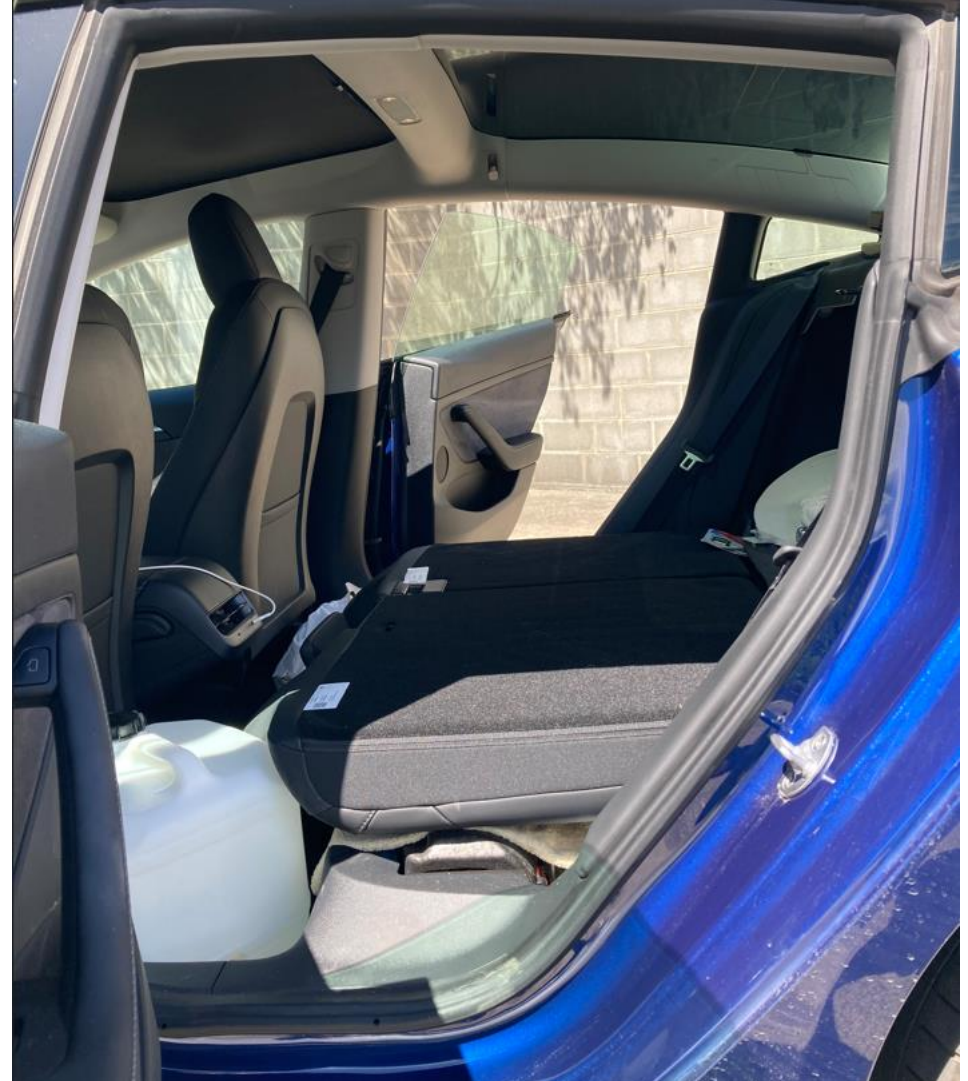
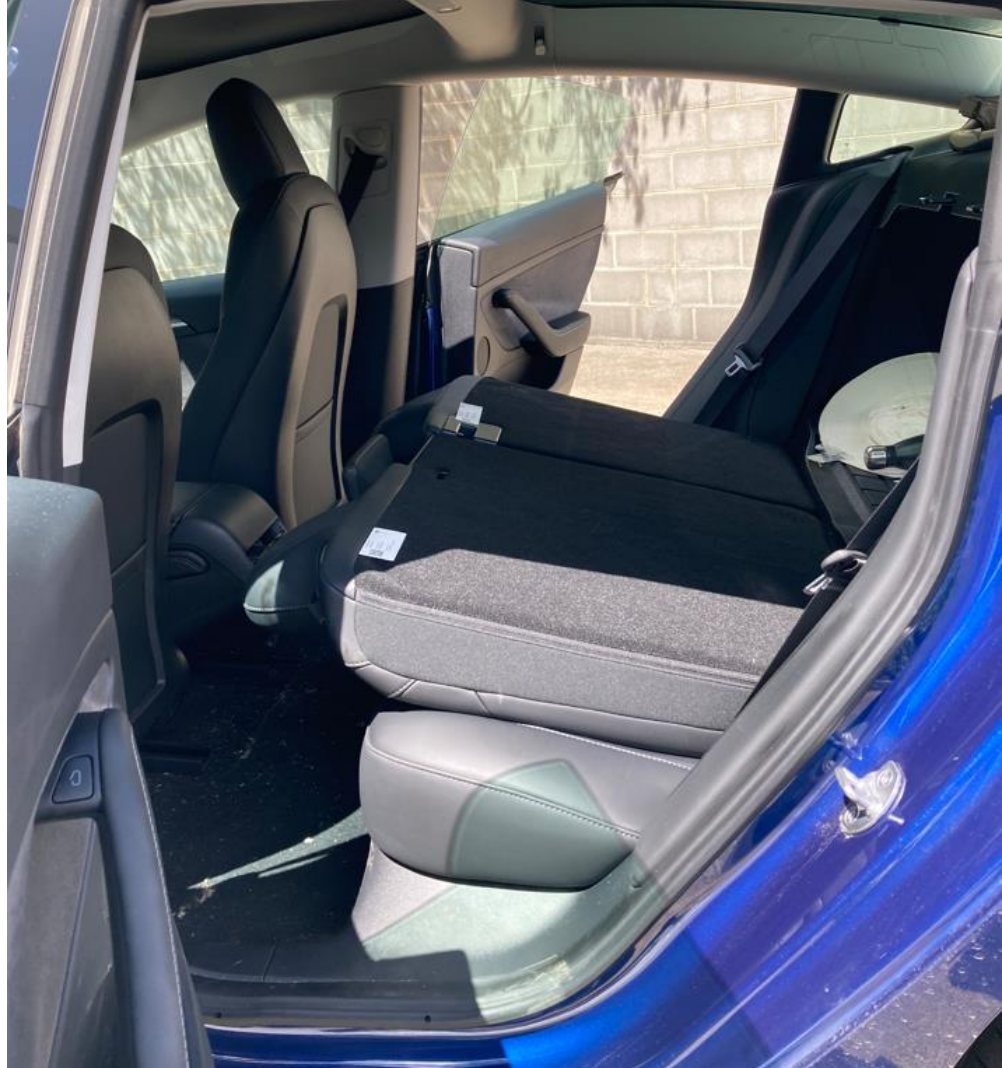
<u>Motor Vehicles</u>	
0m to 4.5m One Way	\$360
0m to 4.5m Return	\$630
4.51m to 4.8m One Way	\$430
4.51m to 4.8m Return	\$760
4.81m to 5.9m One Way	\$525
4.81m to 5.9m Return	\$920

January

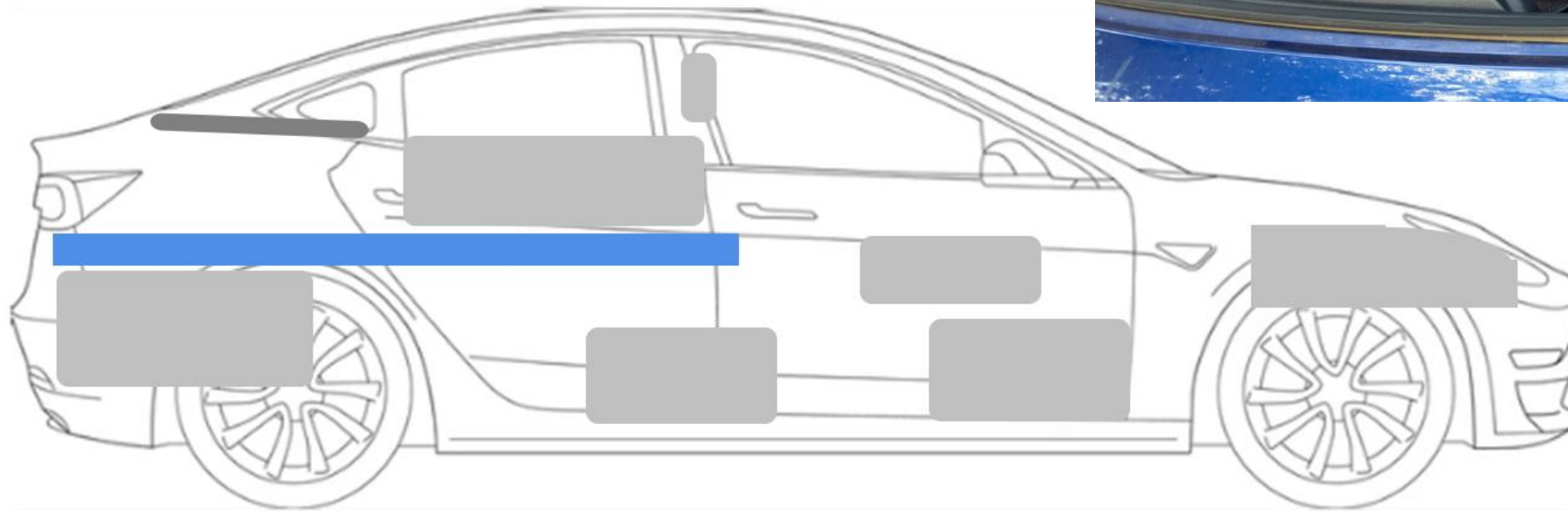
Sunday	Monday	Tuesday	Wednesday
			1 NEW YEARS DAY 🇺🇸
5	6	7 Depart Bridport – 0530 Arrive Lady Barron – 1330 Depart Lady Barron – 2230	8 Arrive Bridport - 0630
12	13 Depart Bridport – 2330	14 Arrive Lady Barron – 0730 Depart Lady Barron - 1700	15 Arrive Bridport - 0100
19	20	21 Depart Bridport – 0530 Arrive Lady Barron – 1330 Depart Lady Barron – 2200	22 Arrive Bridport - 0600
26 Australia Day	27 AUSTRALIA DAY HOLIDAY	28 Depart Bridport – 2330	29 Arrive Lady Barron – 0730 Depart Lady Barron – 1600 Arrive Bridport - Midnight

Check in is required 2 hours before departure.

Preparing the car



Preparation - packing



Schedule

January-February 2025

- Depart Bridport - 11:30pm Tue 28th
- Arrive Lady Barron - 07:30am Wed 29th
- Free camp (2 nights) – Wednesday 29th / Thursday 30th
- Cabin Park (2 nights) – Friday 31st / Saturday 1st
- Free camp (2 nights) – Sunday 2nd / Monday 3rd
- Depart Lady Barron - 9:30pm Mon 3rd
- Arrive Bridport - 5.30am Tue 4th

Hobart to Bridport



Hobart to Bridport



Boarding the ferry



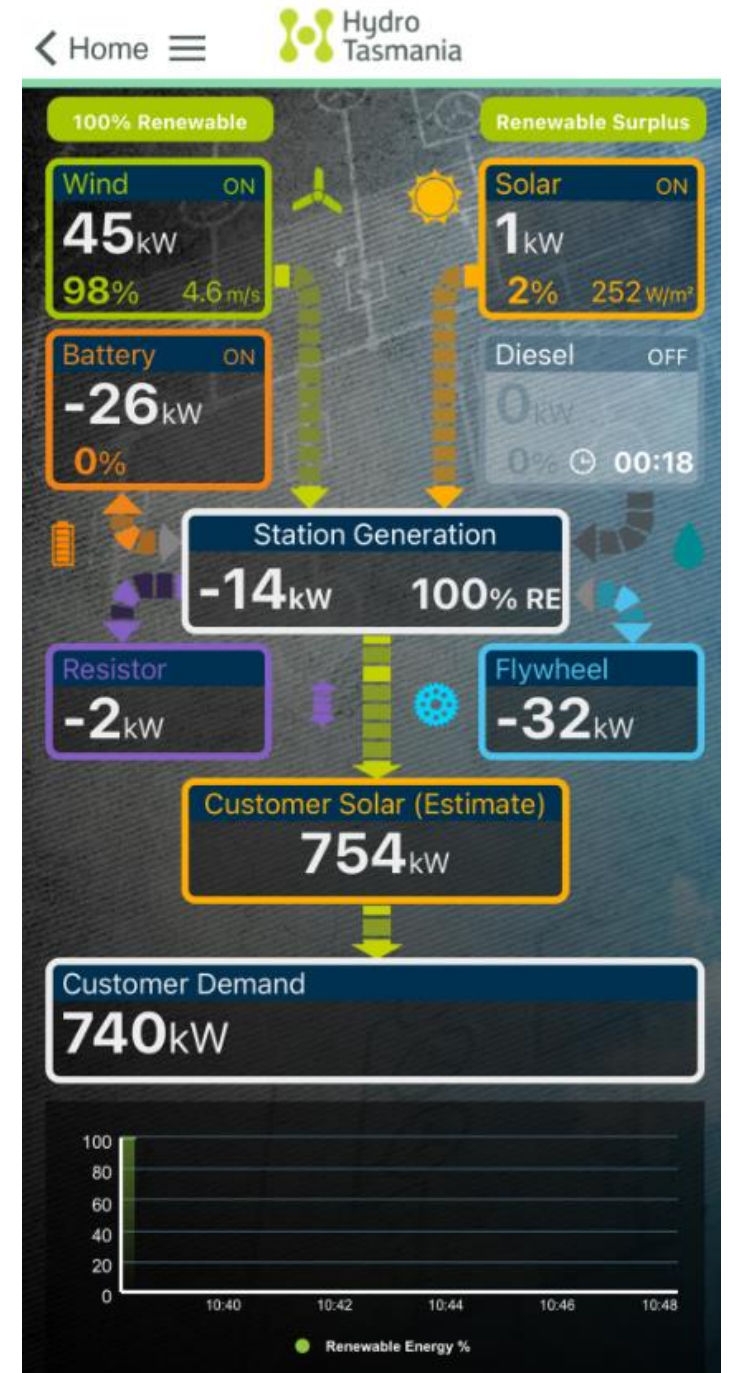
Arrival on the island



A sigh of relief!

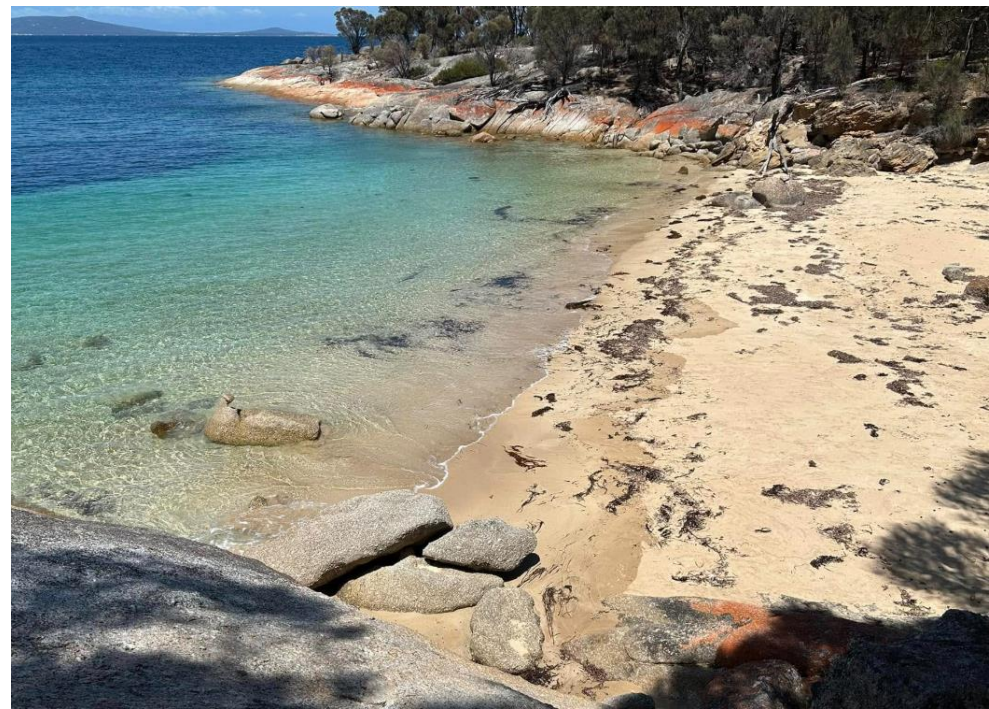


Flinders Island Power Station



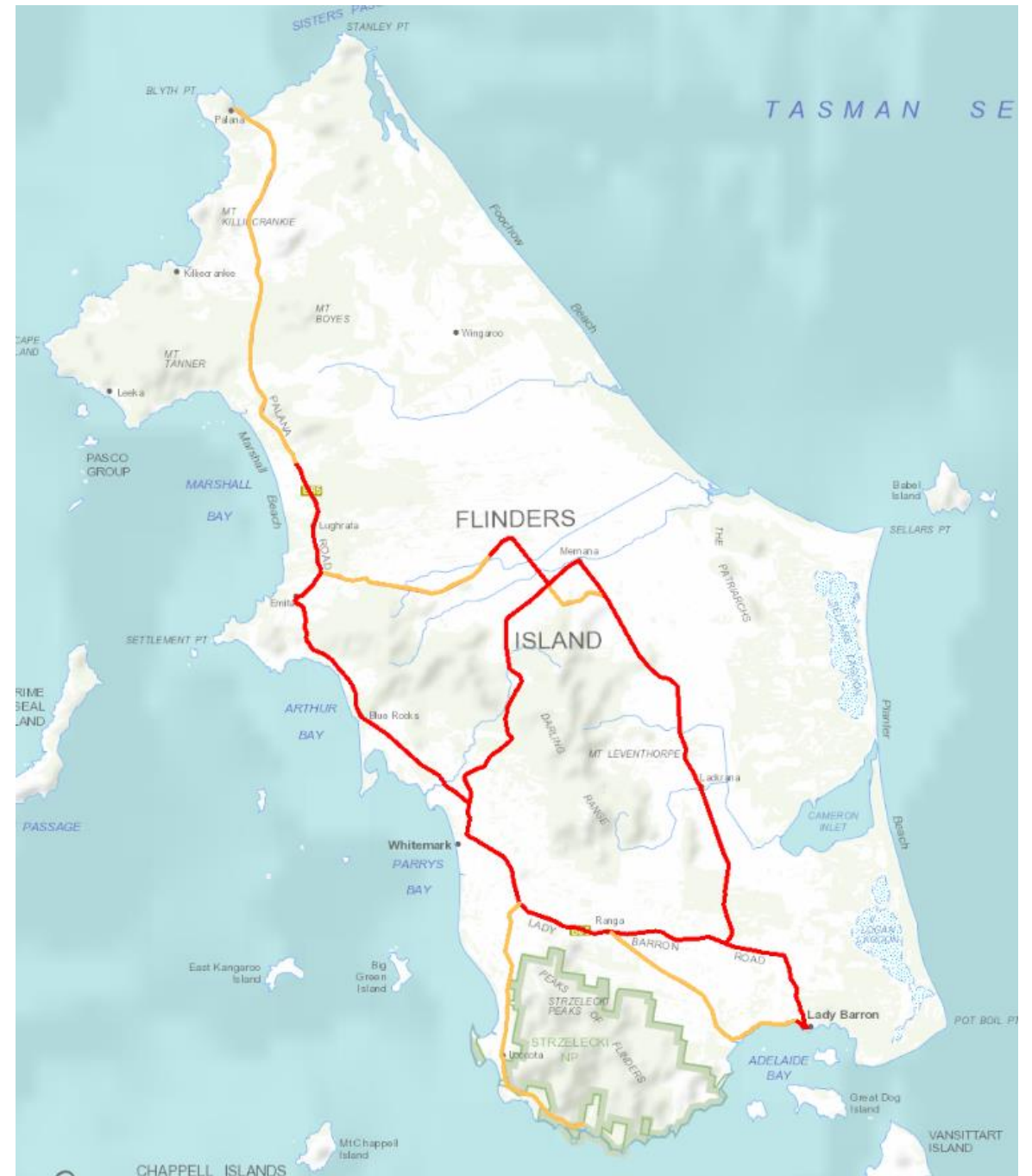








Road quality



Range test

Kilometers **163.46**

Duration **4 hrs, 56 mins**

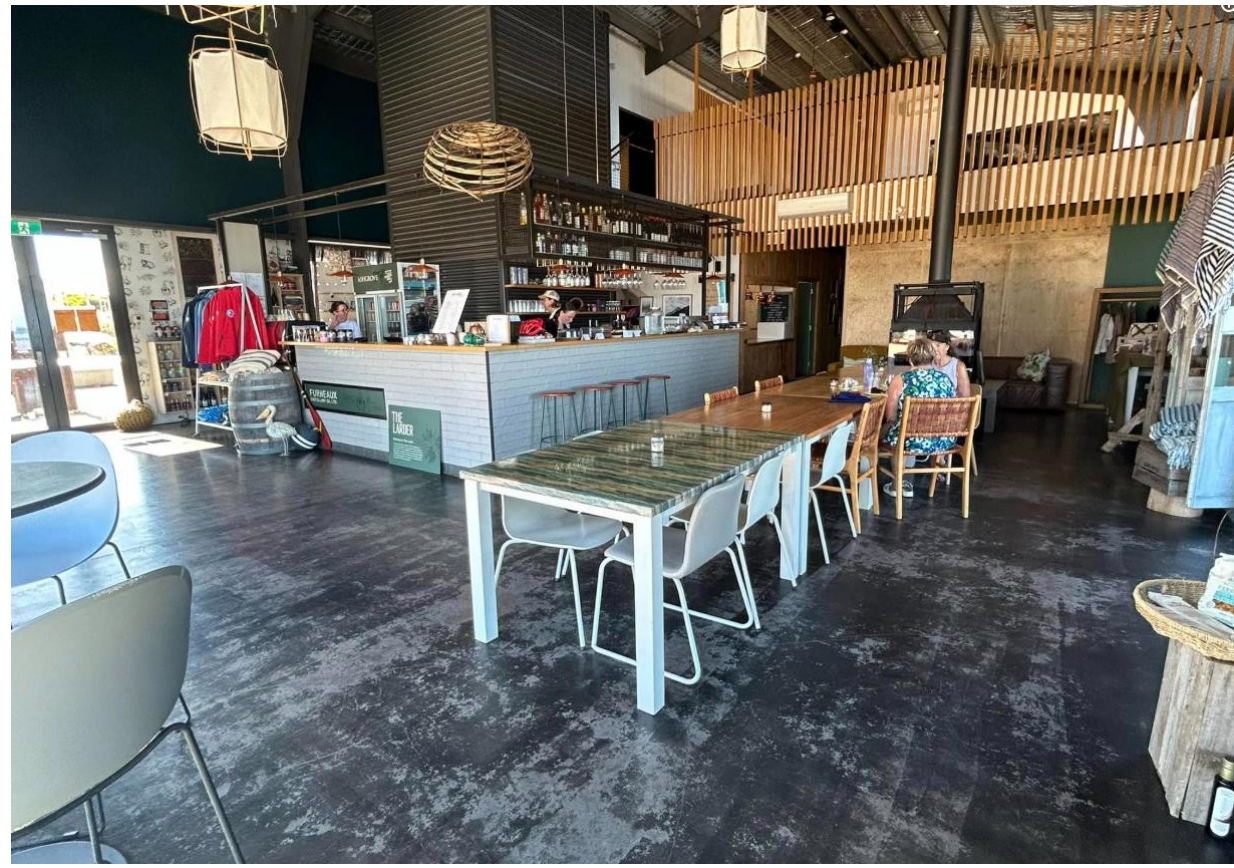
100% → 51% charge



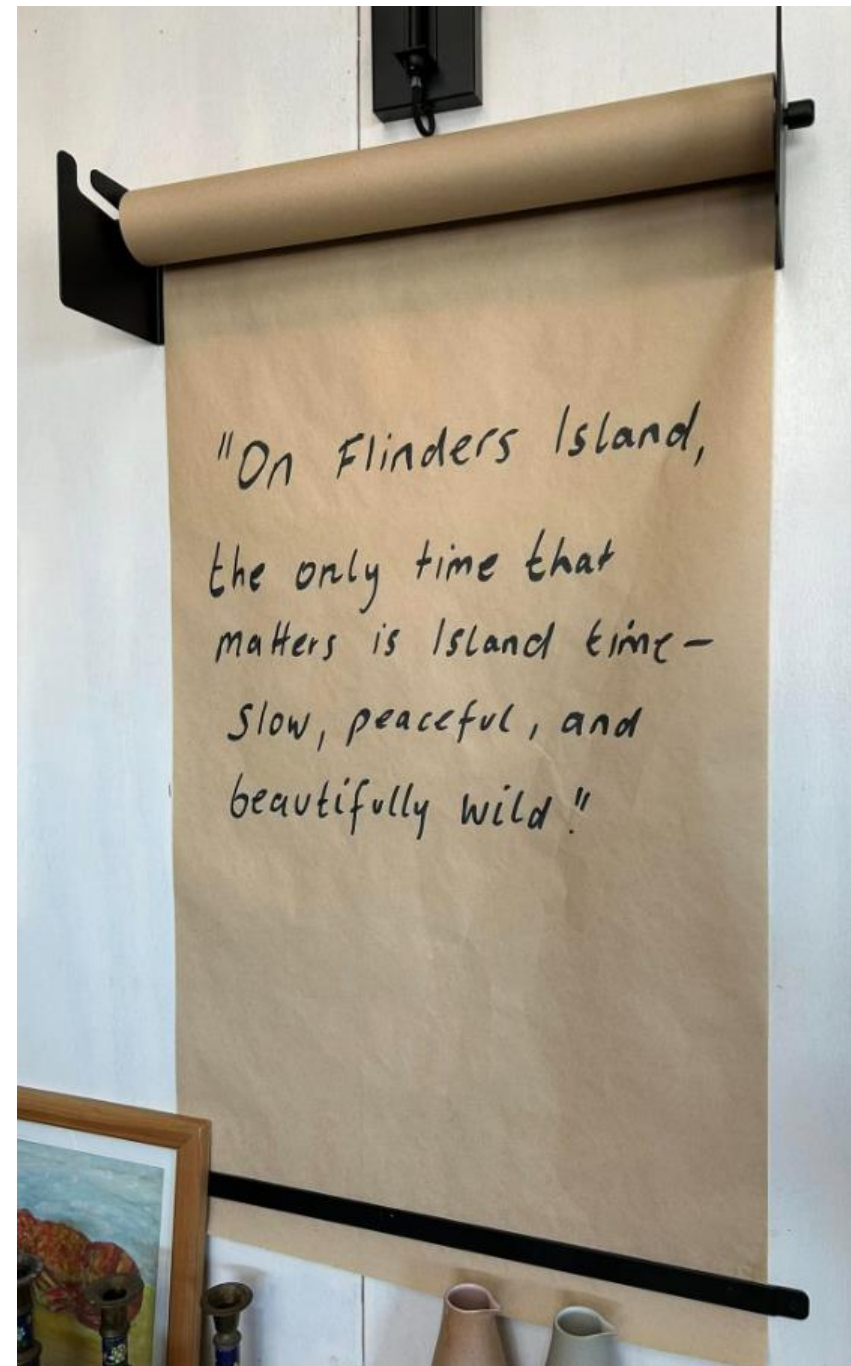
Flinders Island Cabin Park



Flinders Wharf



Flinders Wharf



Whitemark Wharf parkrun











TasPorts



The new Plugshare map



Charles G

New location added at [Lady Barron Pier](#)

Feb 8, 2025



Charles G Whitemark, TAS

New location added at [The Flinders Wharf](#)

Feb 1, 2025



Charles G Whitemark, TAS

New location added at [Whitemark Showgrounds](#)

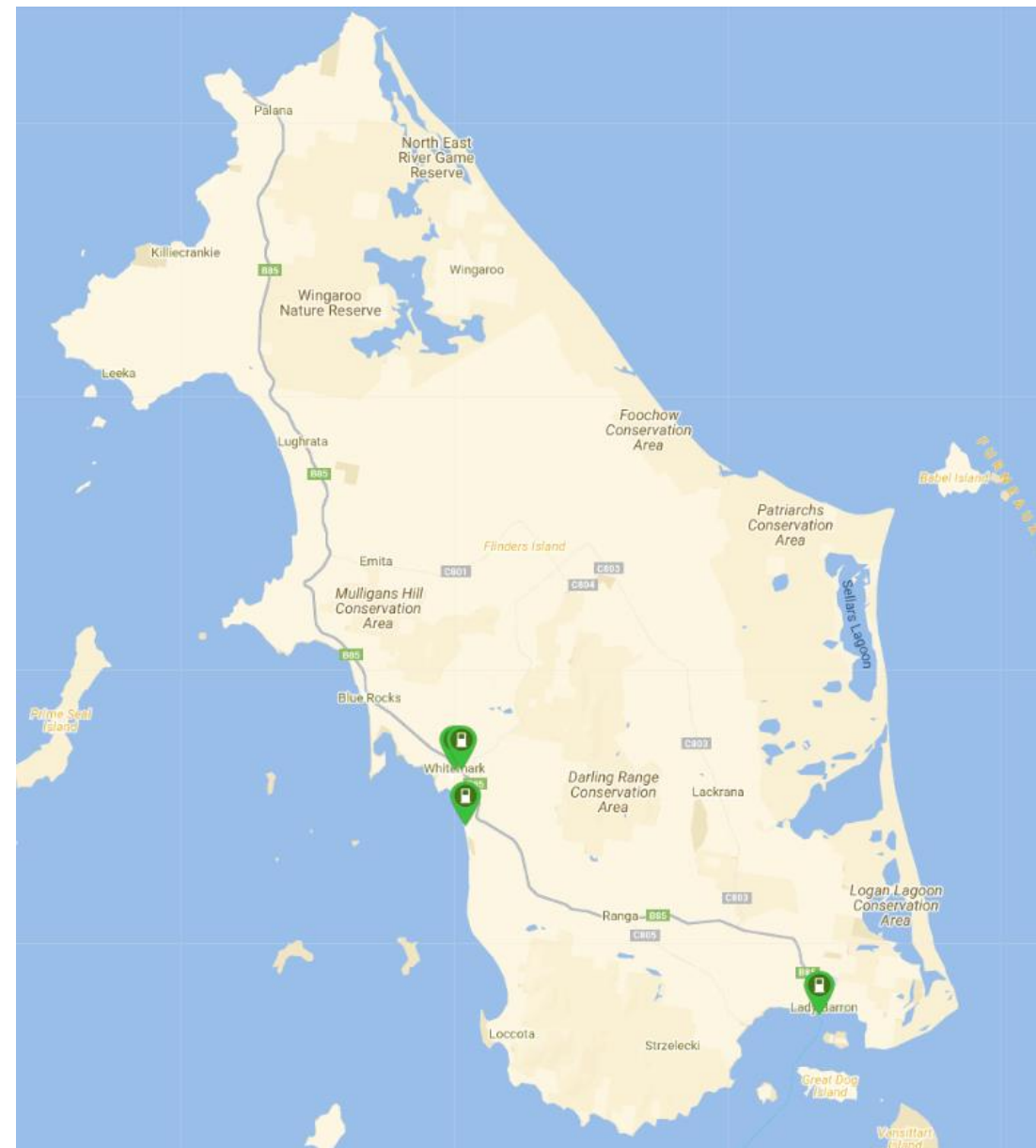
Jan 31, 2025



Charles G Whitemark, TAS

New location added at [Flinders Island Cabin Park](#)

Jan 31, 2025



The trip home



The trip home



End of trip stats

Current Drive	Since Charge	Flinders Is	Odometer
6 km	133 km	1,230 km	57,979 km
14 min	20 kWh	181 kWh	
298 Wh/km	147 Wh/km	147 Wh/km	



Questions?

